

ART150

AFFORDABLE ARTIST STUDIO SPACES IN THE HEART OF DOWNTOWN JERSEY CITY



ART150

150 BAY STREET • JERSEY CITY, NJ

(201) 795-9200

ART150@150BAYSTREET.COM

WWW.150BAYSTREET.COM



150 BAY STREET

Located in the Powerhouse Arts District of Jersey City, just minutes from Manhattan by train or ferry, 150 Bay Street is the embodiment of the luxury loft experience.

A landmark building listed on the Federal Register of Historic Places, 150 Bay was built in 1908 as a warehouse by the architect Howard Chapman. Converted to residential, commercial and retail spaces in the 21st century, the building is truly a mix of historic and modern architectural details.

Large, open floor plans, 14' high ceilings, oversized windows, and polished concrete floors are just a few of the things that distinguish 150 Bay Street as a premiere luxury loft community.

Staying in? Fully equipped kitchens with granite counter tops, brand new appliances and a 10,000 ft² roof deck all help to complement spaces that are ideal for entertaining. Stepping out? 150 Bay Street is surrounded by a neighborhood filled with restaurants, bars, shops and galleries.

So, if you are looking for a desirable alternative to Manhattan, look no further than 150 Bay Street in Jersey City. It's all that you'll need for a truly modern, luxurious and convenient lifestyle.

THE BUILDING

Location

Bay Street between Provost Street and Marin Boulevard

Year Built

1908

Renovations

Residential Conversion - 2005

Ground Floor Retail Conversion - 2009

Building Size

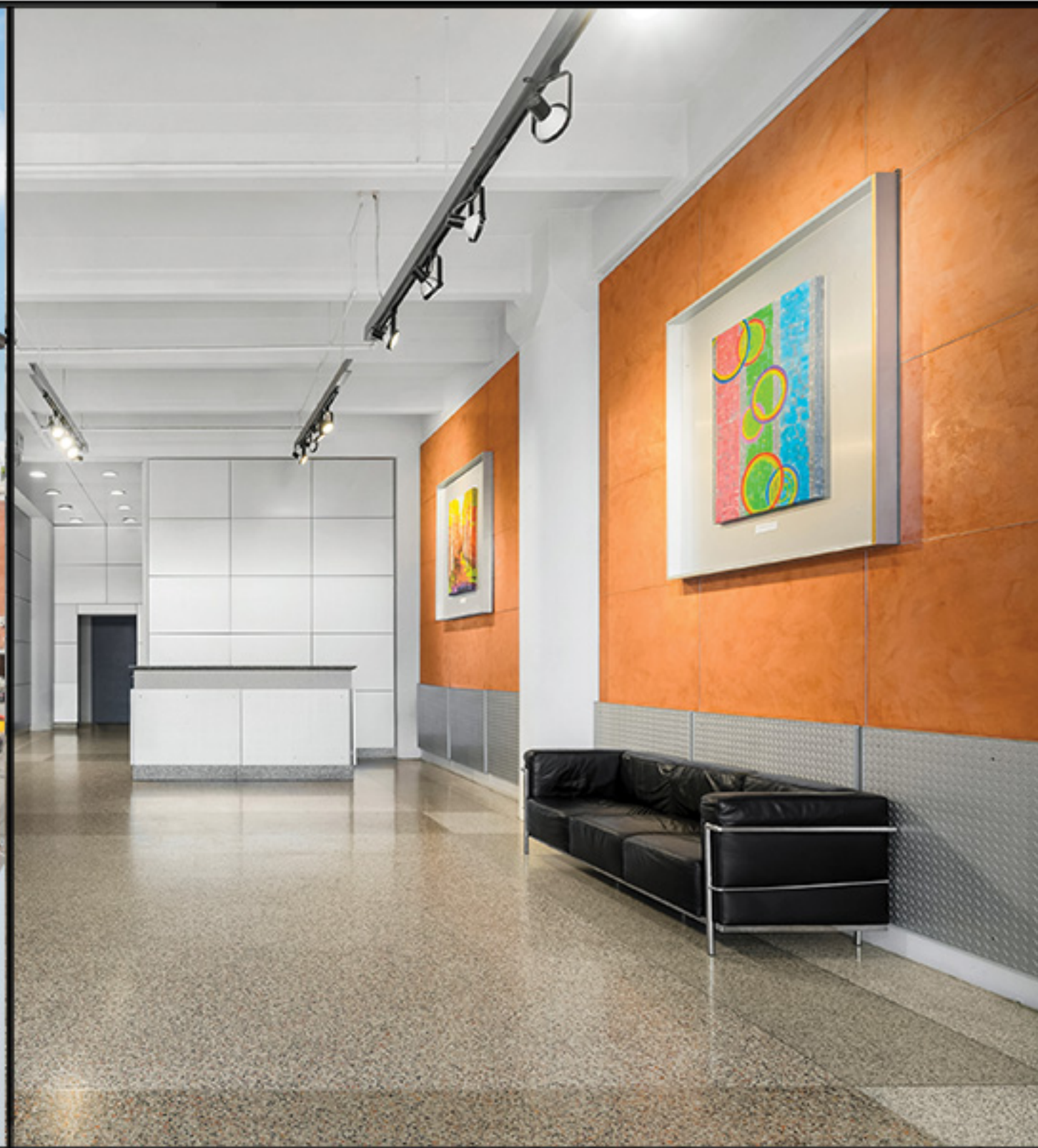
203,000 SF

Floors

9 plus penthouse

Mezzanine

1 below-grade





ART150

Affordable artist studio spaces in the heart of Downtown Jersey City

For over a decade, 150 Bay Street has provided live-work units to local artists at competitive rates. As part of our on-going evolution, an entire 40,000 sf floor is now being developed as affordable studio space for professional working artists. The studios are modern and sleek with great attention paid to details and amenities that will help drive inspiration, collaboration and creativity.

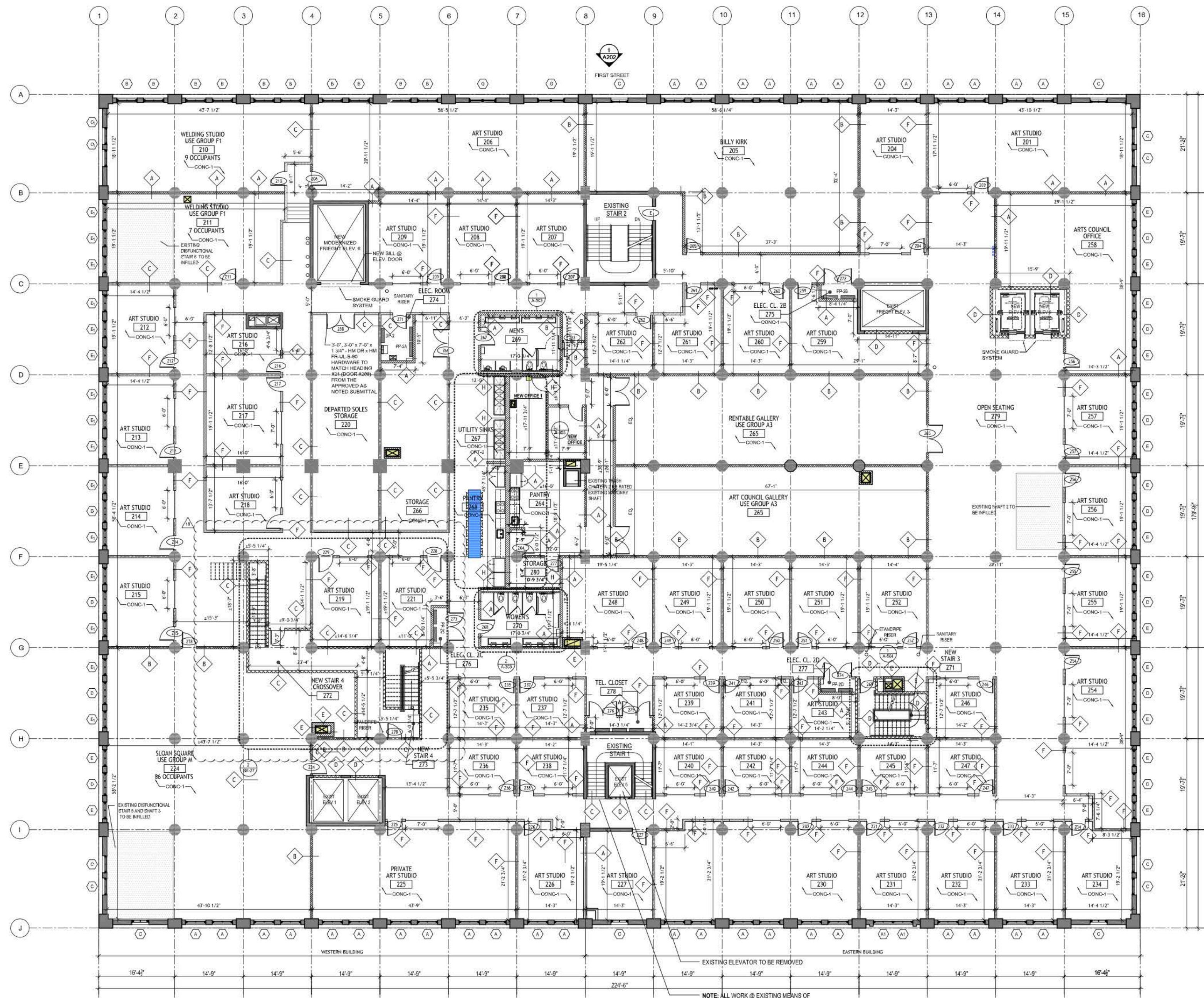
- Studio spaces ranging from 250-700 sf
- PATH access 2 blocks away; Only minutes to NYC
- Landmark loft building with brand-new lobby
- Polished concrete floors, 14-foot ceilings & over-sized windows
- Communal pantry & lounge area
- Shared slop sinks throughout space
- Freight elevator access
- Gallery / showcase space
- WiFi capability



FIRST STREET

MARIN BOULEVARD

PROVOST STREET



NOTE: ALL WORK @ EXISTING MEANS OF EGRESS TO BE COMPLETED AFTER INSTALLATION AND COMPLETION OF NEW EGRESS STAIRS

BAY STREET






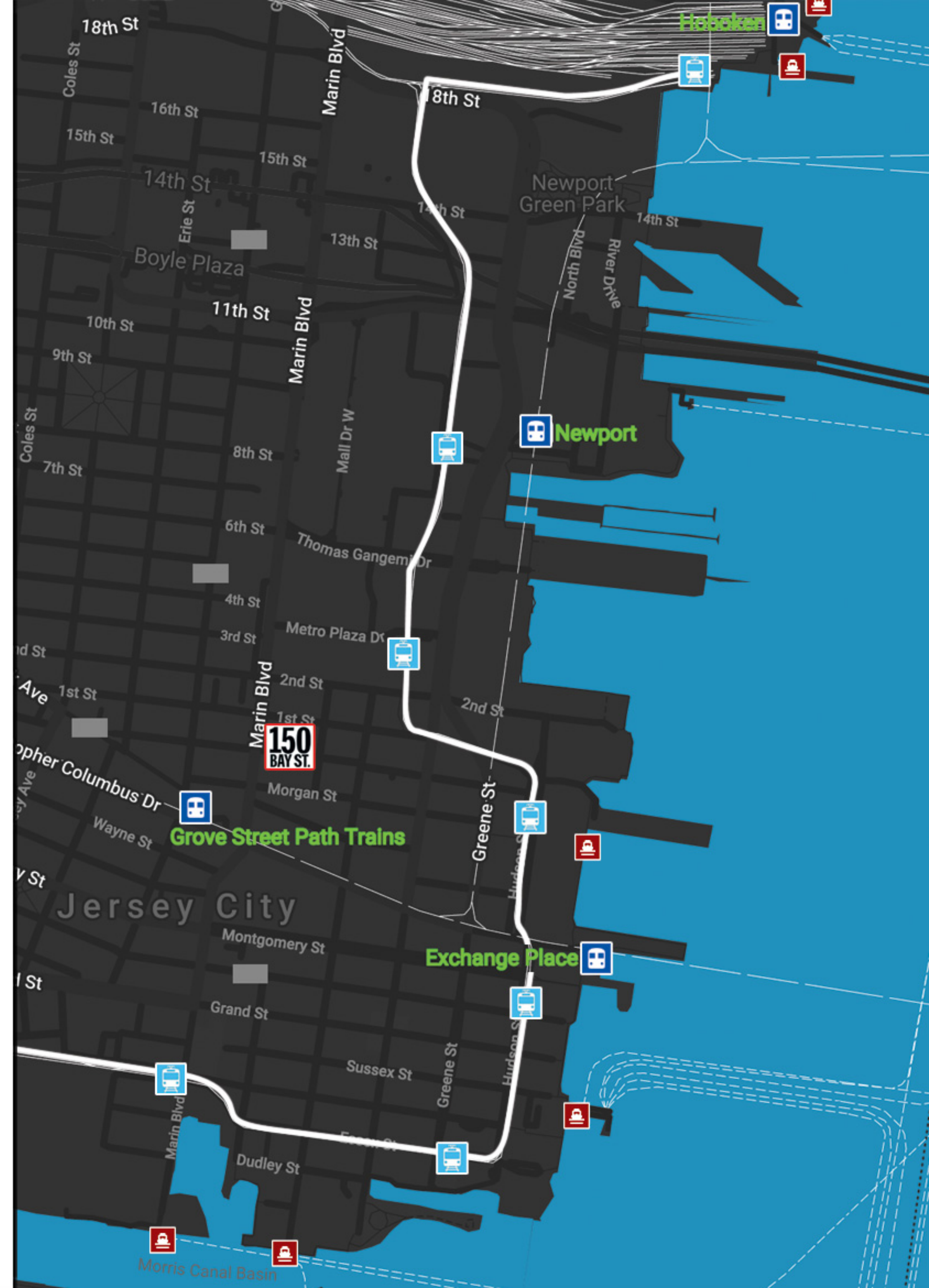
LOCATION

Part of the New York metropolitan area, and clearly seen from Manhattan over the expanse of the Hudson, Jersey City shares significant mass transit connections with Manhattan and has, over the last decade, established itself as one of the premier destinations to work and to live in New Jersey.

Fast transport is provided by PATH service from Exchange Place, connecting Jersey City to the World Trade Center transportation hub, Hoboken, and Newark Penn Station. The Hudson Bergen Light Rail has three stations at Harborside Financial Center, Essex Street and Exchange Place, where transfer to PATH service and ferry is possible.

Downtown Jersey City is the area from the Hudson River westward to the Newark Bay Extension of the New Jersey Turnpike (Interstate 78) and the New Jersey Palisades; it is also bounded by Hoboken to the north and Liberty State Park to the south.

-  Path Train Station
-  Light Rail Station
-  Ferry Terminal



THE NEIGHBORHOOD

Vibrant, lively, fun and full of activity, the Powerhouse Arts District (PAD) is the center of downtown and the creative heart of Jersey City — and 150 Bay Street is right in the middle of all of the action!

A quick online search will yield 100+ restaurants and bars to choose from, food and wine markets, art galleries, music venues, boutiques, fresh farmer's markets, and more all in walking distance from 150 Bay.



BUILDING SPECIFICATIONS

Location	Bay Street between Provost Street and Marin Boulevard
Year Built	1908
Architect	Howard Chapman
Building Size	203,000 SF
Floors	9 plus penthouse, mezzanine, 1 below-grade
Construction	Concrete
Renovations	Residential conversion - 2005; ground floor, retail conversion - 2009
Loss Factor	Full floors: 27%; Multi-tenanted floors: no greater than 35%
Floor Loads (per SF)	120 lbs./SF
Avg Slab-to-Slab Ceiling Heights	14'
Column Spacing	10'
Elevators	4 passenger, 2 freight
HVAC	Heat pump, cooling tower, space heaters in commercial spaces, tenant-controlled package units in residential spaces
Electrical	6 watts/RSF

Windows	Double-insulated, operable
Fire & Life Safety Systems	Fire alarm system with command station, defibrillator, building fully sprinklered
Security Access	24/7 attended lobby, key fob access, closed-circuit cameras
Building Hours	24/7 residential, 7am-7pm commercial
Telecom Providers	Nextel, Verizon
Cleaning	Common Areas M-F
Bicycle Storage	1 rack
Municipal Incentives	N/A
Transportation	Yellow and red line PATH trains from Grove Station. The Hudson-Bergen Light Rail stops nearby at Harsimus Cove Station. Travel to the World Financial Center or Midtown from the Harborside Ferry Terminal
Amenities (Neighborhood)	Hyatt Regency and Jersey City on the Hudson, Bucket and Bay Gelato, Departed Soles Brewing Co, Hertz and Budget car rentals, the Warehouse Cafe for organic tea and coffee paired with panini, ShopRite grocery store. New York Sports Club
Building Website	www.150baystreet.com

ABOUT THE OWNERS

Over three generations and nearly seven decades, the Gural Family has worked to build a better New York City through its ownership and management of commercial real estate, work with non-profit organizations and dedication to the community. Formerly Newmark Holdings, the newly renamed GFP Real Estate is defined by its commitment to its tenants, partners and property.

Carrying on the tradition started by Founder Aaron Gural, today's Family leadership includes Chairman Jeffrey Gural, Co-Chief Executive Officers Eric Gural and Brian Steinwurtzel, Principal Jane Gural-Senders and General Counsel AnnyRose Pahl. Each member of the team is dedicated to improving New York City through property development, strong tenant relationships, and community involvement. With that legacy in mind, the company focuses on the small- and medium-sized tenants and nonprofit organizations within New York City. To work with GFP Real Estate is to become part of our family.



GFP Real Estate, LLC
125 Park Avenue
New York, NY 10017

(212) 609.8000
gfpre.com

Senior Managing Director
Julia Camacho
jcamacho@gfpre.com
(201) 228.9093