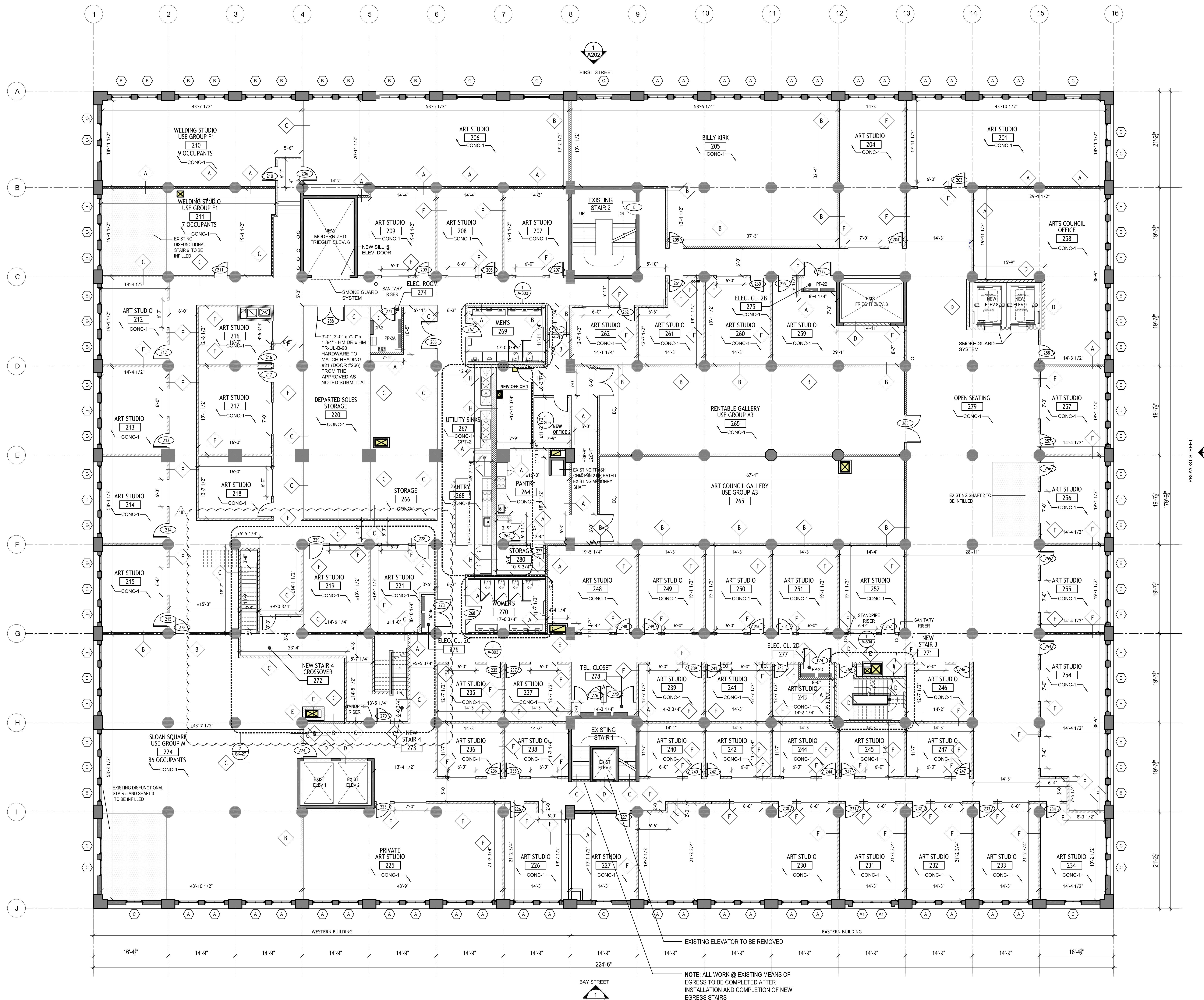


CONSTRUCTION LEGEND:

- EXISTING BUILDING CORE
- EXISTING PARTITION TO REMAIN
- NEW CMU PARTITION
- NEW 2HR FIRE-RATED PARTITION
- NEW FULL HEIGHT PARTITION
- NEW NON-RATED 8' HIGH PARTITION
- NEW DOOR IDENTIFICATION
- EXISTING DOOR TO REMAIN
- WALL TYPE IDENTIFICATION
- NEW WINDOW TYPE IDENTIFICATION
- EXISTING WINDOW TO REMAIN
- ALIGN
- FLOOR FINISH IDENTIFICATION
- INFILL FLOOR
- CHANGE IN FLOOR FINISH

UNIT SUMMARY

| USE | AREA | QUANTITIES |
|-------------------------|--------------|------------|
| ART GALLERY | 3,500 SQ.FT. | 1 |
| ART STUDIOS | 200 SQ.FT. | 34 |
| | 500 SQ.FT. | 1 |
| | 900 SQ.FT. | 2 |
| ART STUDIO (BILLY KIRK) | 1,800 SQ.FT. | 1 |
| WELDING STUDIO | 1,200 SQ.FT. | 1 |
| | 600 SQ.FT. | 1 |
| ARTS COUNCIL OFFICE | 1,000 SQ.FT. | 1 |
| RETAIL (SLOAN SQUARE) | 2,500 SQ.FT. | 1 |
| STORAGE | 1,000 SQ.FT. | 1 |



1 2ND FLOOR PLAN
SCALE: 1/8" = 1'-0"

NOTE:
ART STUDIOS USE GROUP F2
242 OCCUPANTS

NOTE: ALL WORK @ EXISTING MEANS OF
EGRESS TO BE COMPLETED AFTER
INSTALLATION AND COMPLETION OF NEW
EGRESS STAIRS

FIFIELD | PIAKER | ELMAN
ARCHITECTS, PC
740 Broadway
New York, New York 10003
tel: 212 979 9272
fax: 212 979 9276
www.fpe-architects.com

NO USE, REPRODUCTION OR
DISSEMINATION MAY BE MADE OF THIS
DRAWING & CONCEPTS SET FORTH
HEREON WITHOUT THE PRIOR WRITTEN
CONSENT OF
FIFIELD PIAKER ELMAN
ARCHITECTS P.C.
COPYRIGHT © 2017

| No. | Description | Date |
|-----|---|----------|
| 1 | REVISED STAIR 3 AND DETAILS SK-37 | 2.20.20 |
| 2 | REVISED OUTLET PANTRY LOCATIONS SK-15 | 2.12.20 |
| 3 | REVISED WALL SK-38 | 2.11.20 |
| 4 | REVISED STAIR CORRIDOR ROP SK-37 | 2.10.20 |
| 5 | REVISED STAIR 4 1ST AND 2ND FLOOR SK-47 | 02.08.20 |
| 6 | REVISED 2ND FLOOR GALLERY SPACE SK-28 | 01.29.20 |
| 7 | REVISED STAIR 1ST AND 2ND FLOOR SK-17 | 01.28.20 |
| 8 | REVISED FOR 3RD FLOOR ROOMS RM SK-20 | 01.09.20 |
| 9 | REVISED FOR 2ND FLOOR SK-21 | 01.09.20 |
| 10 | REVISED FOR MANHOLE LAYOUT SK-11 | 12.30.19 |
| 11 | REVISED DIM LAYOUT SK-14 | 11.13.19 |
| 12 | REVISED PER GFPR REQUEST SK-13 | 10.08.19 |
| 13 | REVISED FOR DOB COMMENTS SK-12 | 9.27.19 |
| 14 | REVISED FOR FIELD CONC. 2ND FL. SK-16 | 8.28.19 |
| 15 | REVISED MARK BLVD ELEVATION SK-7 | 8.03.19 |
| 16 | REVISED DIM LAYOUT SK-5 | 8.22.19 |
| 17 | REVISED FOR FIELD CONDITION SK-4 | 8.14.19 |
| 18 | REVISED STAIR DETAIL SK-2 | 7.31.19 |
| 19 | REVISED FOR 1ST FL BATHROOM SK-1 | 7.17.19 |
| 20 | REVISED FOR LOBBY CEILING | 7.16.19 |
| 21 | ISSUED TO CITY PLANNING | 5.23.19 |
| 22 | ISSUED FOR CONSTRUCTION | 5.7.19 |
| 23 | ISSUED TO CITY PLANNING | 4.22.19 |
| 24 | ADDENDUM 01 | 02.20.19 |
| 25 | REVISED FOR EXIST SIGNS | 01.18.19 |
| 26 | ISSUED TO CITY PLANNING | 12.20.18 |
| 27 | ISSUED FOR BID | 11.20.18 |
| 28 | ISSUED FOR BID | 10.29.18 |
| 29 | ISSUED FOR REVIEW | 08.02.18 |
| 30 | ISSUED TO SHPO | 07.11.18 |

Project:
150 BAY STREET

Sheet Title:
2ND FLOOR PLAN

Job No: 2017037.00
Scale: AS SHOWN

Drawn: VF, JL, AS, VU, AL
Date: 11.15.2017

Drawing No:
A-102.00

